

a28

asbestos essentials

Non-licensed tasks

This information will help employers and the self-employed to comply with the Control of Asbestos Regulations 2012.

It is also useful for trade union and employee safety representatives.

Asbestos fibres can cause lung cancer and lung diseases.

The sheet covers the points you need to follow to reduce exposure to an adequate level.

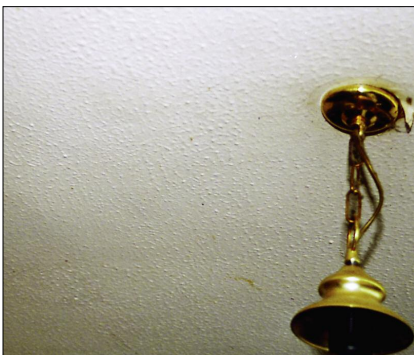
It can act as a risk assessment for asbestos if it matches what you plan to do.

Follow all the points, or use equally effective measures.

Only carry out this work if you are properly trained and have the right equipment.

Main points

- Asbestos fibres can kill.
- Keep exposures low using all the controls in this sheet.
- Also follow sheet a0 and equipment and method (em) sheets; see 'Essential information'.



Textured coating on a ceiling

Removing textured coating from a small area, eg 1 square metre

What this sheet covers

This sheet describes good practice when you need to remove a small area of textured coating, eg around 1 square metre, in preparation for other maintenance work.

This sheet is not appropriate for large areas. The work is still non-licensed but you need to make a risk assessment.

If the coating covers asbestos insulating board, use an HSE-licensed contractor.

Preparing the work area

- Do you need to isolate any services?
- Restrict access – minimise the number of people present.
- Close doors. Use tape and notices to warn others.
- A two-stage airlock is not required.
- Ensure adequate lighting.

Equipment

- 500-gauge polythene sheeting and duct tape
- Warning tape and notices
- Class H vacuum cleaner (BS 8520) – see sheet em4
- Penetrating stripping fluid or gel, or a steam generator
- Permanent sealant
- Plastic dustpan
- Scraper
- Paint brush
- Bucket of water and rags
- Asbestos waste container, eg labelled polythene sack
- Clear polythene sack

Personal protective equipment (PPE) – see sheet em6

- Provide:
 - disposable overalls fitted with a hood;
 - boots without laces (laced boots are hard to decontaminate); and
 - respiratory protective equipment.



SAFETY CHECKLIST

- ✓ Can you avoid disturbing asbestos by doing the job in some other way?
- ✓ Do you need a licence for the work?
- ✓ Always follow all legal requirements.
- ✓ Follow the task guidance sheet.
- ✓ Use an asbestos waste container.
- ✓ Dispose at a licensed disposal site.

Caution:

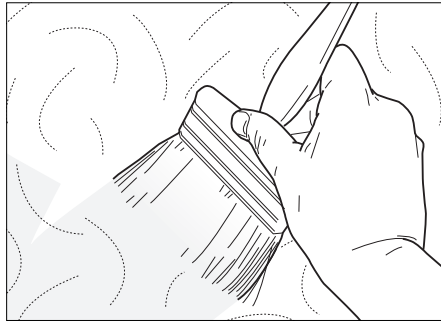
- Don't sweep up dust or debris - use a Class H vacuum cleaner or damp rags.
- Don't take used overalls home.
- Don't reuse disposable PPE.
- Don't smoke.
- Don't eat or drink in the work area.

OTHER HAZARDS

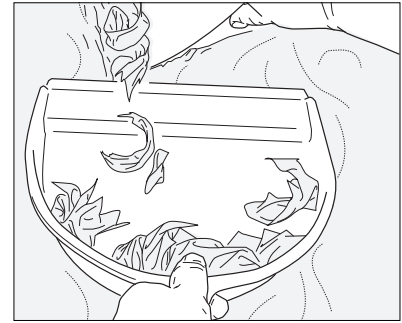
Work at height – see www.hse.gov.uk/falls/index.htm. Take precautions to avoid falls. Must you work from a ladder? Where necessary, erect an access platform.

Slips and trips – see www.hse.gov.uk/slips/index.htm. Floors protected with polythene become very slippery when wet.

There may also be other hazards – you need to consider them all.



Gently brush on penetrating fluid, or dampen and loosen the coating with steam



Gently scrape the coating into the dustpan

Procedure

- Remove furniture and fittings from the area, or protect them from contamination using 500-gauge polythene sheet.
- Protect nearby surfaces from contamination. Cover with 500-gauge polythene sheeting and fix with duct tape to non-asbestos surfaces.

Caution: Never scrape through or sand down textured coatings or stripped surfaces. Don't use power tools to cut through textured coatings.

Removal

- Dampen and pick off any loose pieces of coating and put them in the waste container.
- Either brush on penetrating fluid gently, or dampen and loosen the coating with steam.
- When loose, gently scrape the coating into the dustpan. Empty this into the waste container.
- Seal the stripped surface with sealant.

Cleaning and disposal

- Clean the area and equipment with the Class H vacuum cleaner and damp rags.
- Put debris, used rags, paint brush, polythene sheeting and other waste in the asbestos waste container and tape it closed.
- Put the asbestos waste container in a clear polythene sack and tape it closed.
- Disposal – see sheet em9.

Personal decontamination

- See sheet em8.

MORE HELP

- **More asbestos pictures** – www.hse.gov.uk/asbestos/gallery.htm
- **Help to decide if work is licensed** – www.hse.gov.uk/asbestos/licensing/index.htm
- For information about health and safety, or to report inconsistencies or inaccuracies in this guidance, visit www.hse.gov.uk/. You can view HSE guidance online or order priced publications from the website. HSE priced publications are also available from bookshops.
- These task (a) sheets and equipment and method (em) sheets can be downloaded free from www.hse.gov.uk/asbestos/essentials/index.htm
- See sheet a0 for details of more guidance.

Clearance and checking off

- Visually inspect the area to make sure that it has been cleaned properly.
- Clearance air sampling is not normally required.
- Provide a statement – see sheet em10.
- Get the premises owner, dutyholder or client to check off the job.

ESSENTIAL INFORMATION

Download and follow these advice sheets from www.hse.gov.uk/asbestos/essentials/index.htm:

- em1 *What to do if you uncover or damage materials that could contain asbestos*
- em2 *Training*
- em4 *Using a Class H vacuum cleaner for asbestos*
- em6 *Personal protective equipment (PPE)*
- em7 *Using damp rags to clean surfaces of minor asbestos contamination*
- em8 *Personal decontamination*
- em9 *Disposal of asbestos waste*
- em10 *Statement of cleanliness after textured coating removal*

This document is available at www.hse.gov.uk/asbestos/essentials/index.htm

© Crown copyright If you wish to reuse this information visit www.hse.gov.uk/copyright for details. First published as part of *Asbestos Essentials Task Manual 2001*.

Published by the Health and Safety Executive 04/12

This guidance is issued by the Health and Safety Executive. Following the guidance is not compulsory and you are free to take other action. But if you do follow the guidance you will normally be doing enough to comply with the law. Health and safety inspectors seek to secure compliance with the law and may refer to this guidance as illustrating good practice.